

**Lot 17**



# **Glen Estate**

**64-66 GLEN RD, STOKES VALLEY**



# Lot 17





# Lot 17

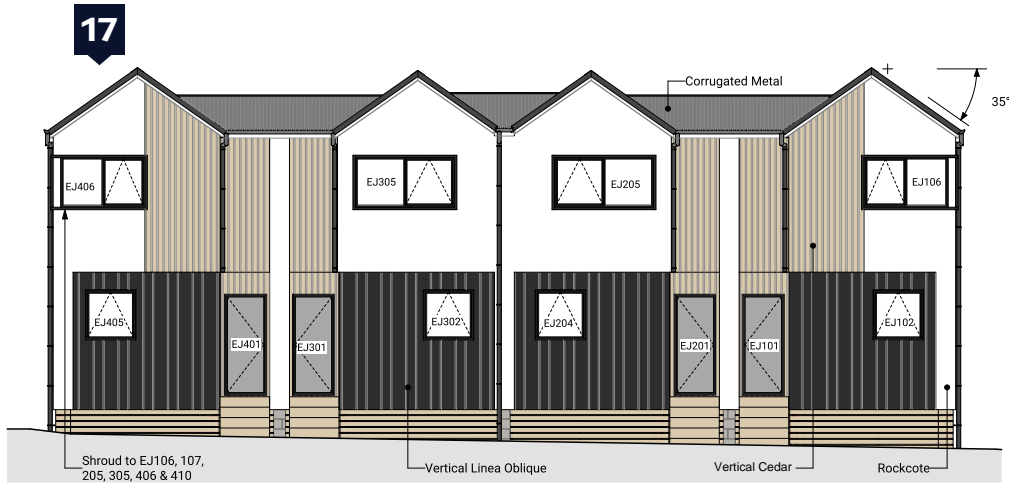




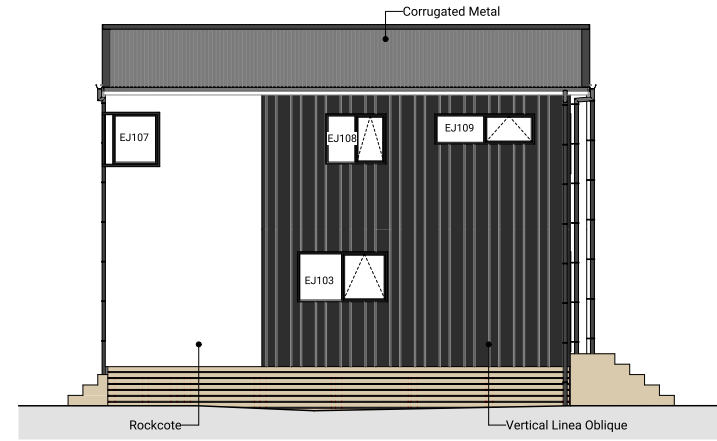
# Lot 17



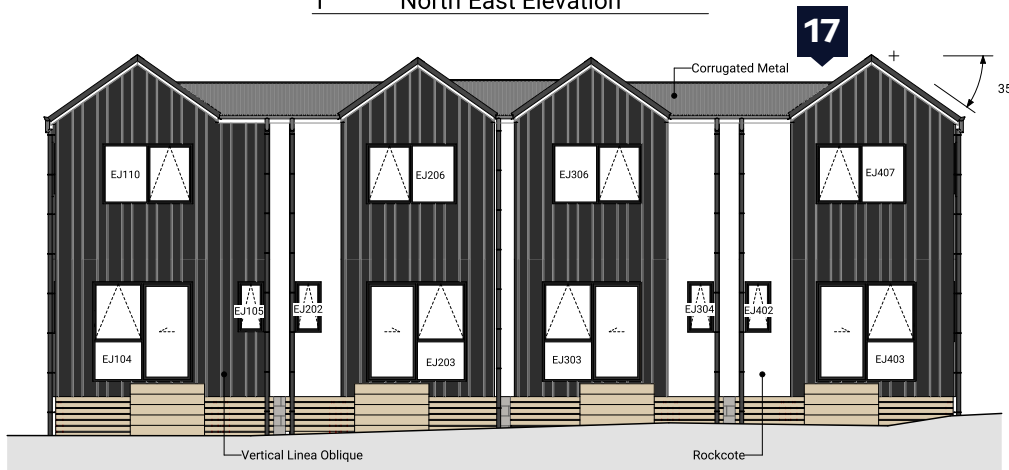
# Lot 17



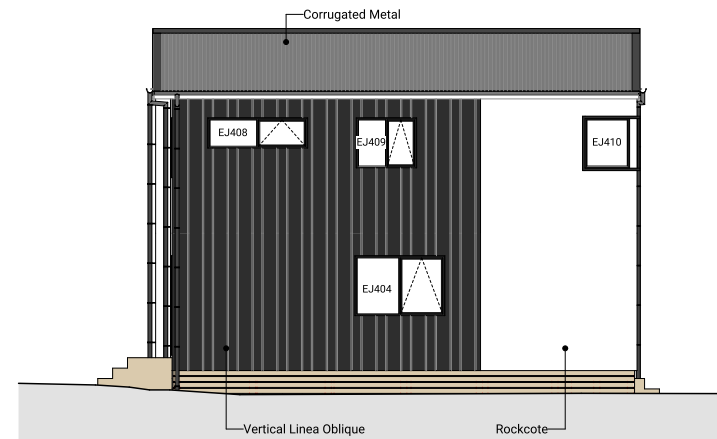
1 North East Elevation



2 North West Elevation



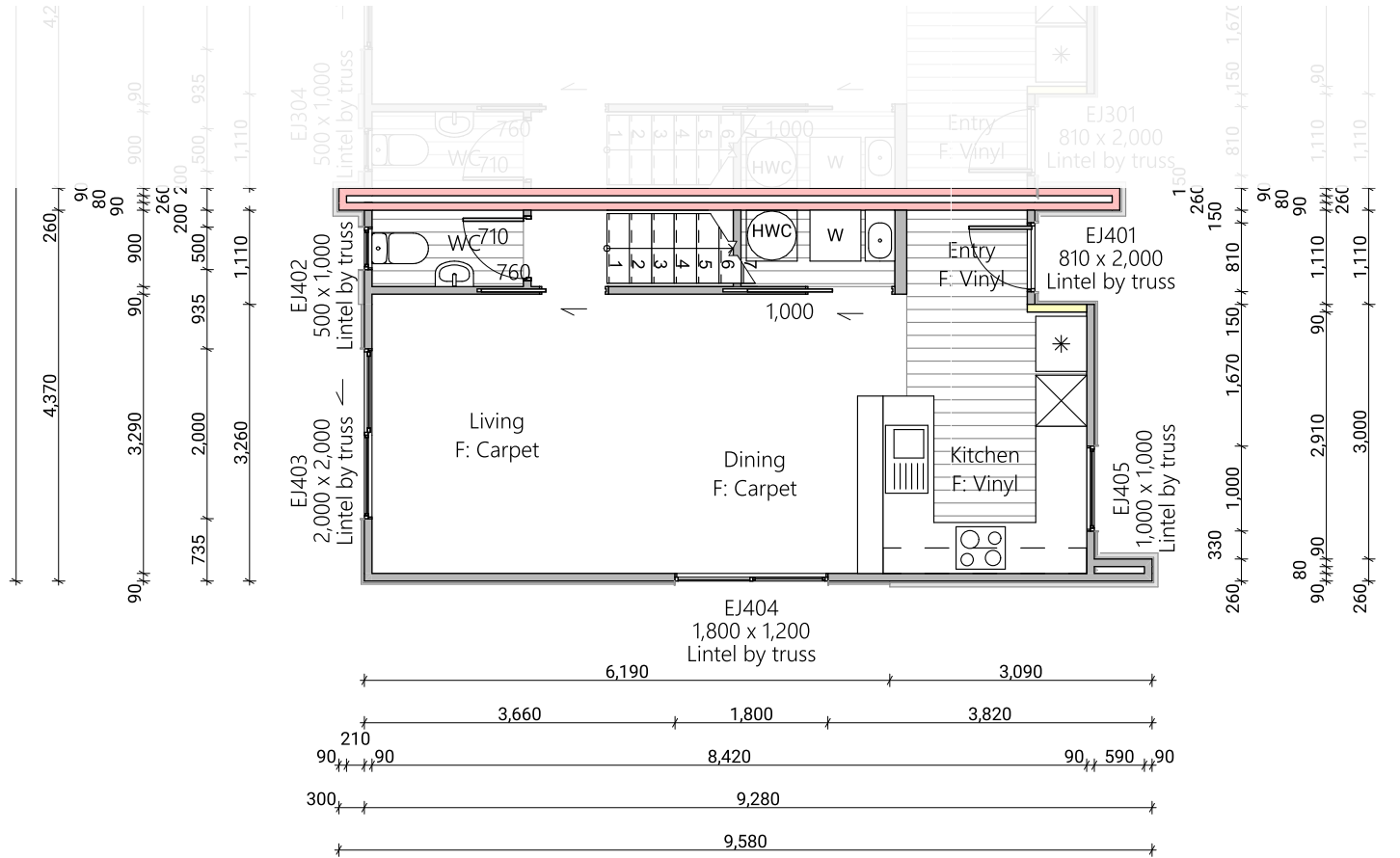
3 South West Elevation



4 South East Elevation

# Lot 17

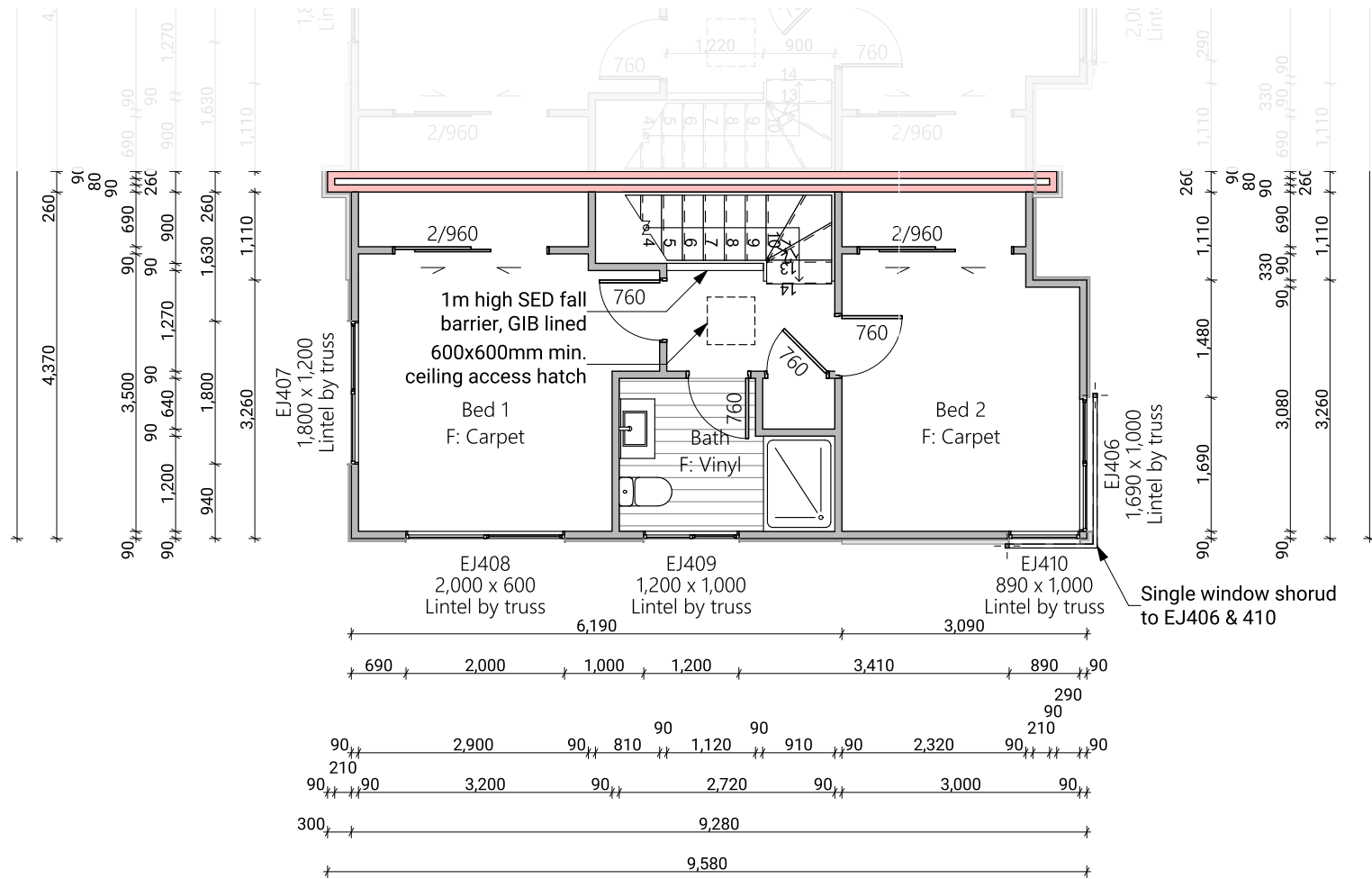
Lower Floor Area	38.18m <sup>2</sup>
Upper Floor Area	41.00m <sup>2</sup>
Total Floor Area	79.18m <sup>2</sup>



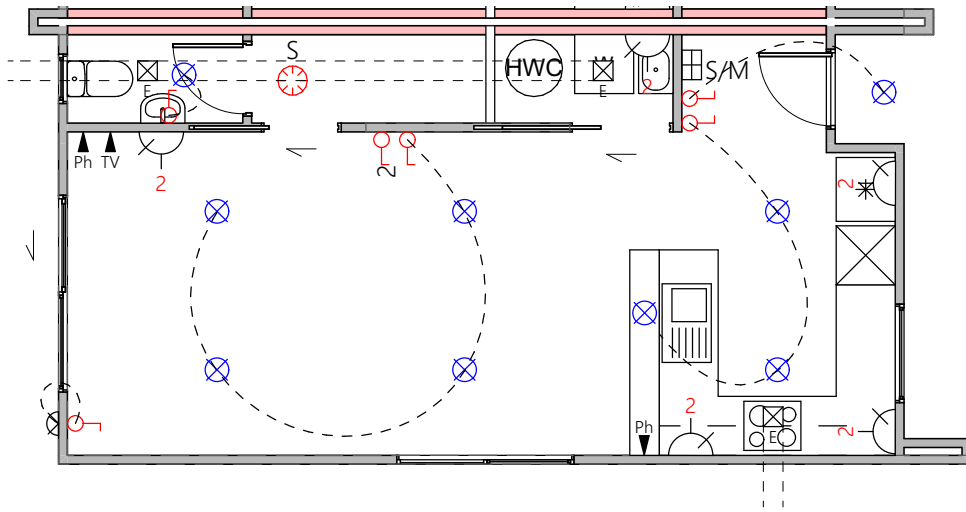


# Lot 17

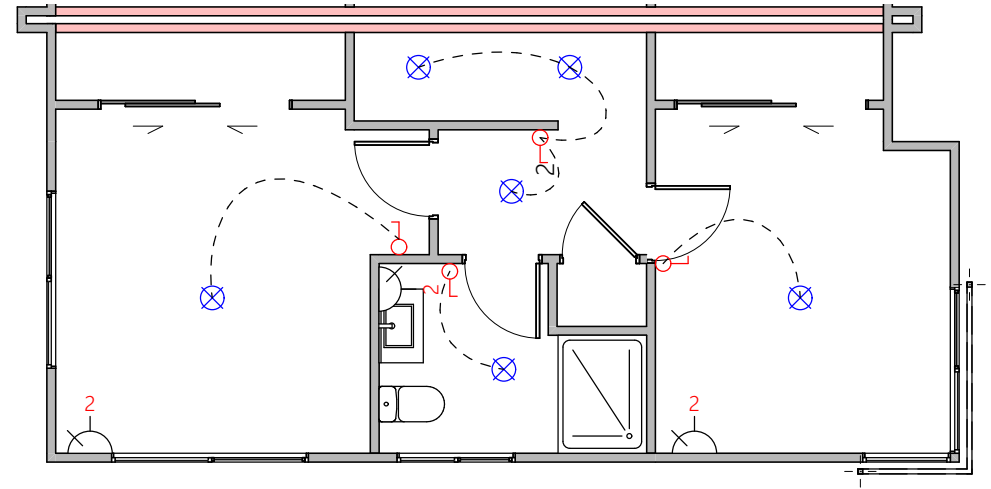
Lower Floor Area	38.18m <sup>2</sup>
Upper Floor Area	41.00m <sup>2</sup>
Total Floor Area	79.18m <sup>2</sup>



# Lot 17



Lower Electrical Plan

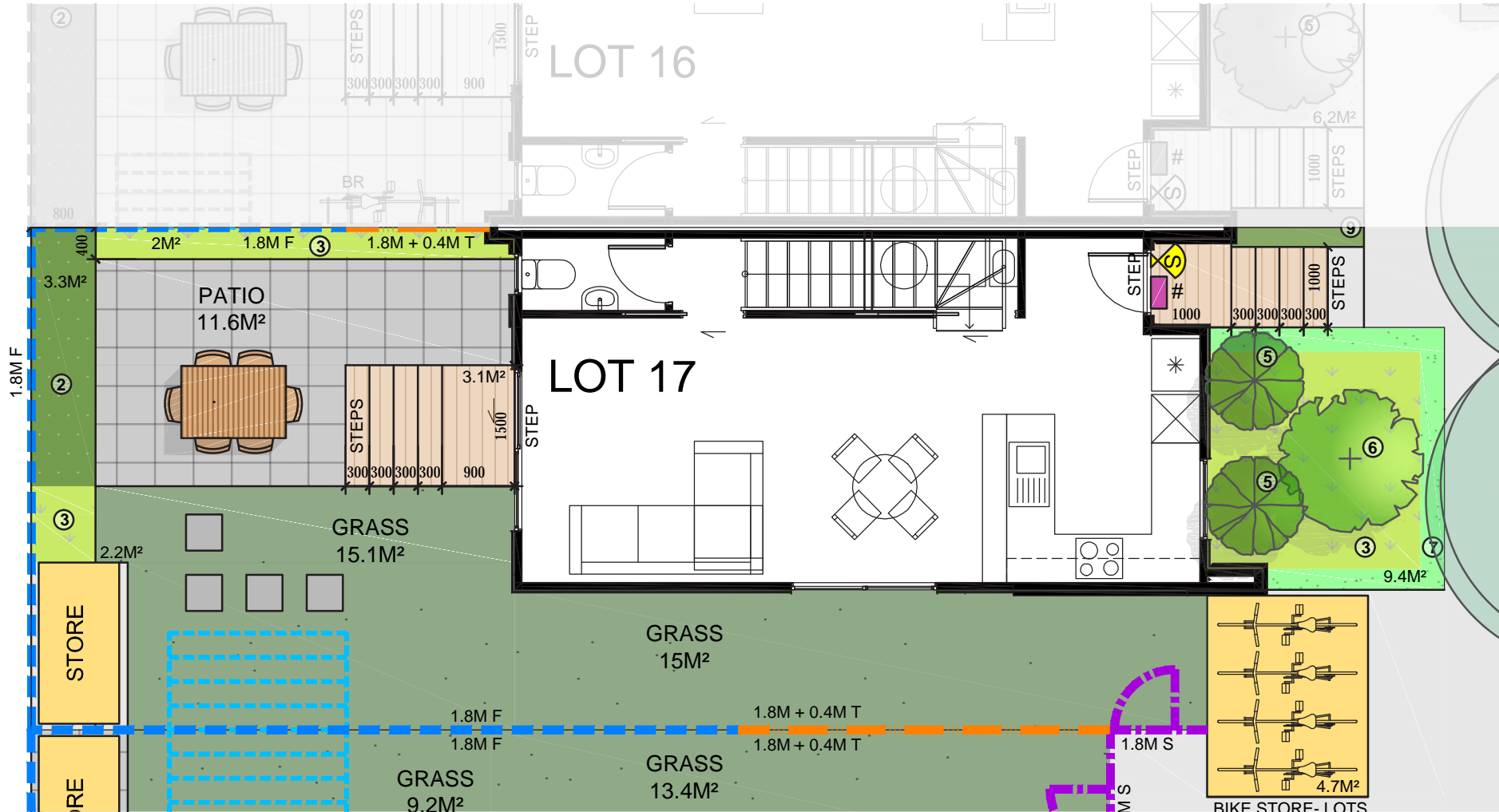


Upper Electrical Plan

S/M	Smart Meter	Power point	Light switch
G	Garage door motor	Phone outlet	Two way light switch
S	Smoke detector	Television outlet	Recessed downlight
Extractor fan			

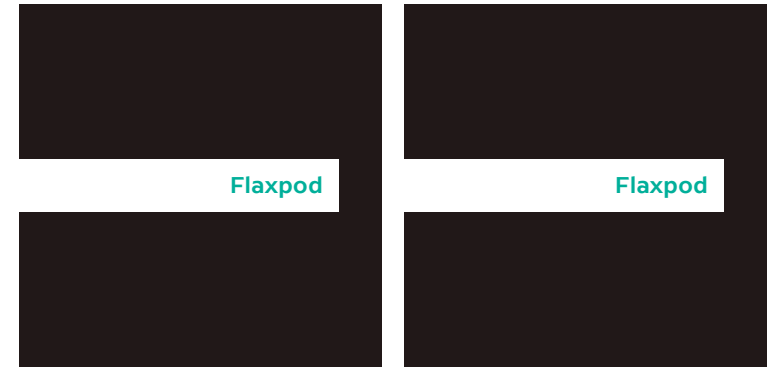


# Lot 17



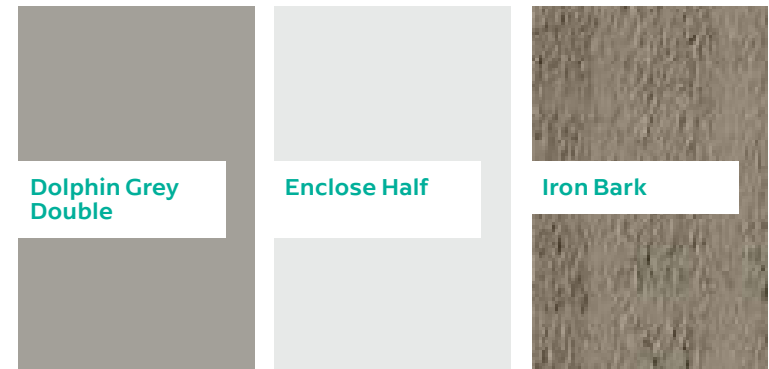
# Lot 17

	Product	Colour/Finish
<b>EXTERIOR LOT 17</b>		
Roof	Colorsteel Corrugated	Flaxpod
Fascia/Barge Boards	Colorsteel	Flaxpod
Spouting	Colorsteel	Flaxpod
Downpipes	Colorsteel Marley PVC Colour (if retention tank)	Flaxpod OR Ironsand
Retention Tank (if required)	Thin Tanks NZ	Monument
Soffits/Eaves	Painted	Wattyl Enclose Half
Cladding 1	Linea Weatherboards (painted)	Wattyl Dolphin Grey Double
Cladding 2	Board & Batten (painted)	Wattyl Enclose Half
Cladding 3	Cedar – vertical (stained)	Wattyl Forestwood (Iron Bark)
Concrete Letterbox	Painted	Wattyl Enclose Half
Aluminium Joinery (with clear glass)	Powdercoated	Flaxpod
(Residential Hardware to all aluminium joinery is colour matched to joinery)		
Front Door	Vertical Groove	Flaxpod
Front Door Handle	Residential Lever Hardware	Powdercoat finish matched to door



Roof

Aluminium Joinery



Cladding 1

Cladding 2

Cladding 3

All colour swatches are indicative only