

**Lot 1**

**130 Wellington Rd**

**WAINUIOMATA**

◆ 1 ◆



**Lot 1**





# Lot 1





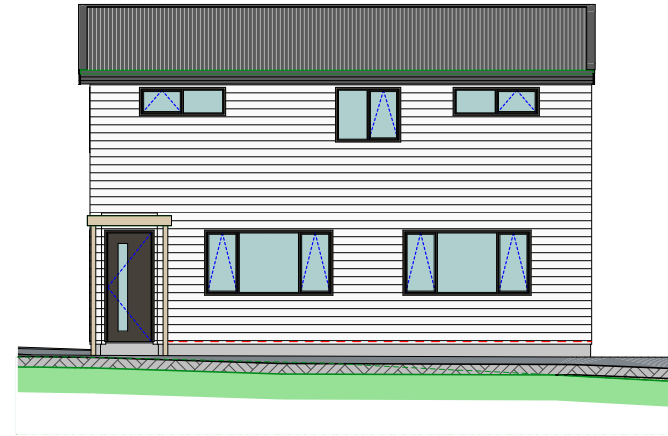
# Lot 1



# Lot 1



WEST



SOUTH

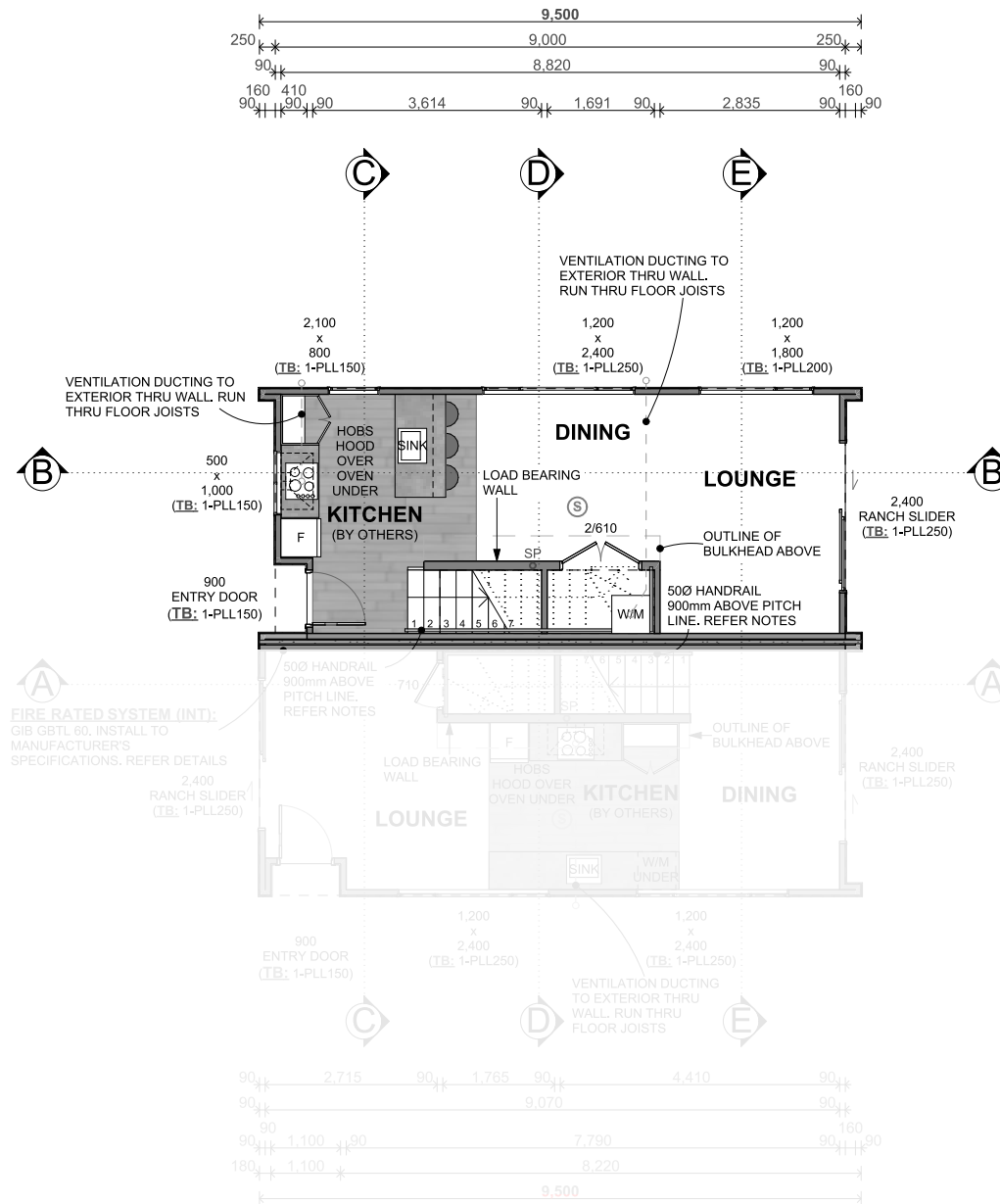


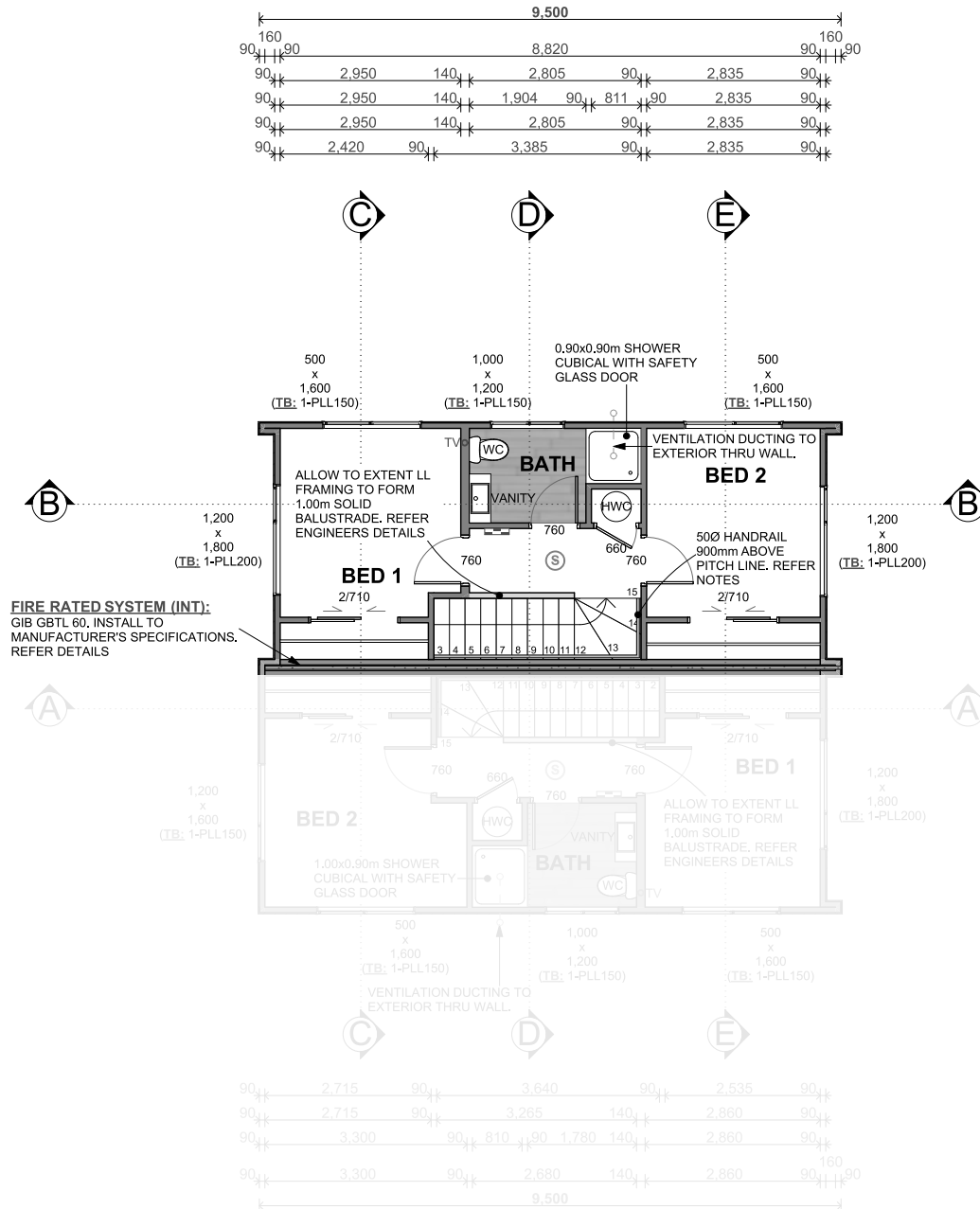
EAST



NORTH

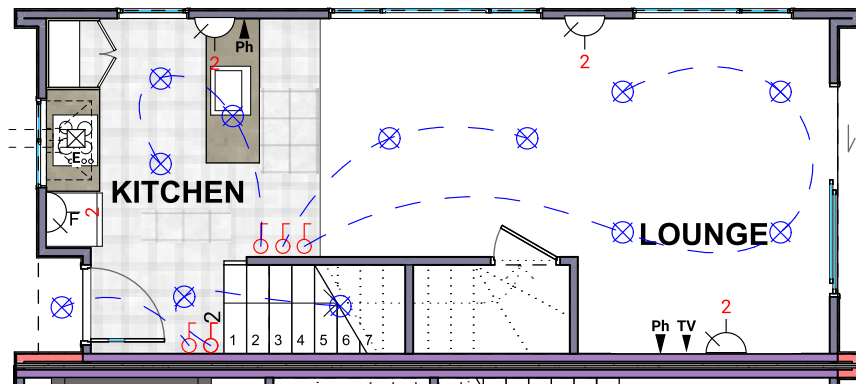
TH1= 35.60m<sup>2</sup>  
 TH1 TOTAL = 71.80m<sup>2</sup>



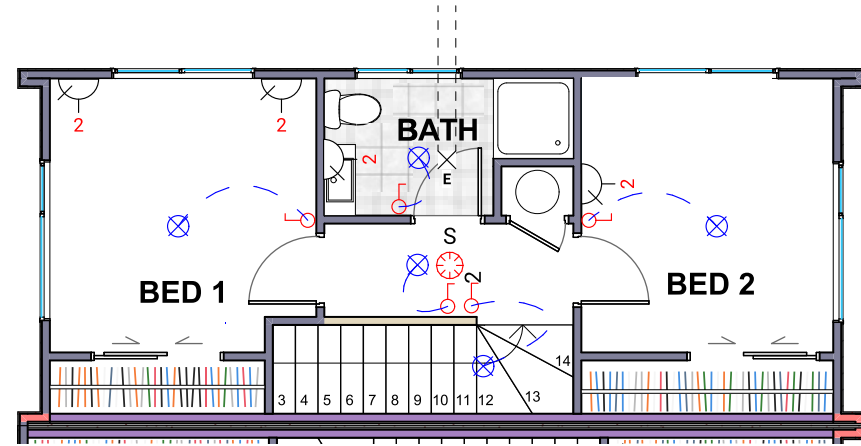


TH1 = 36.20m<sup>2</sup>  
 TOTAL TH1 = 71.80m<sup>2</sup>



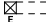






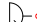
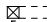
# Lot 1



Lower Electrical Plan

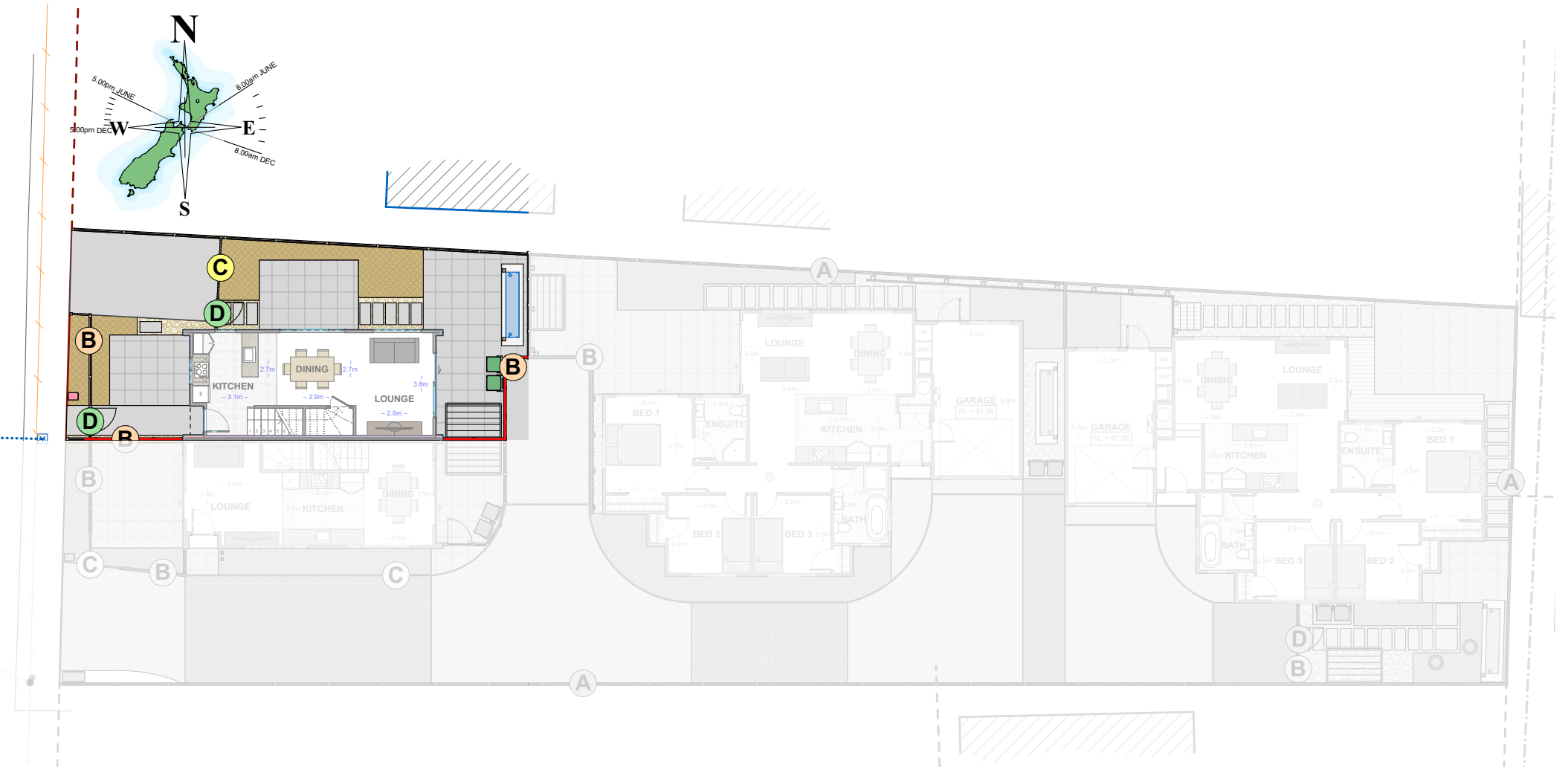


Upper Electrical Plan

	Light switch		Smart Meter		Extractor fan
	Two way light switch		Garage door motor		Phone outlet
	Recessed downlight		Smoke detector		Television outlet
	Power point		Extractor fan		

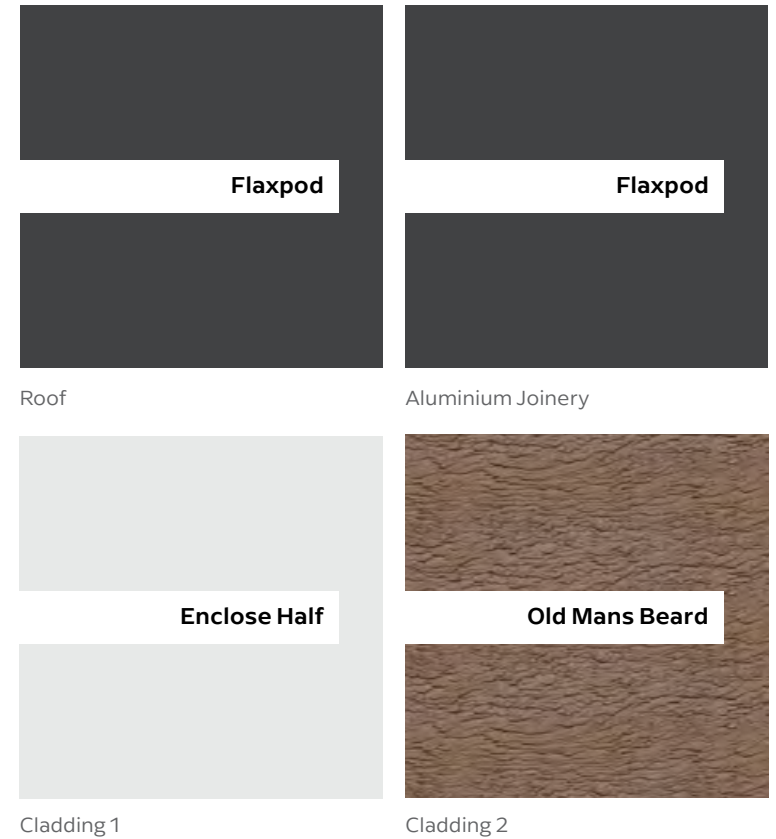


# Lot 1



# Lot 1

	Product	Colour/Finish
<b>EXTERIOR</b>		
Roof	Colorsteel Corrugated	Flaxpod
Fascia/Barge Boards	Colorsteel	Flaxpod
Spouting	Colorsteel	Flaxpod
Downpipes	Colorsteel	Flaxpod or Ironsand
Retention Tanks	ThinTanks	Monument
Soffits/Eaves	Painted	Wattyl Enclose Half
Cladding 1	Rockcote Plaster, painted	Wattyl Enclose Half
Cladding 2	Cedar (vertical) cladding, stained	Wattyl Forestwood in Old Mans Beard
Concrete Letterbox	Painted	Wattyl Hippo Double
Garage Door	Nil	
Garage Door Reveal	Nil	
Aluminium Joinery (with clear glass)	Powdercoated	Matt Flaxpod
Front Door	Vertical Groove	Flaxpod
Front Door Handle	Residential Lever Hardware	Powdercoat finish matched to door
(Residential Hardware to all aluminium joinery is colour matched to joinery)		



*All colour swatches are indicative only*